



---

## Cue Energy Resources Limited

A.B.N. 45 066 383 971

25th Floor  
500 Collins Street  
Melbourne Victoria 3000  
Australia

Telephone: (03) 9629 7577  
Facsimile: (03) 9629 7318  
Email: [mail@cuenrg.com.au](mailto:mail@cuenrg.com.au)  
Website: [www.cuenrg.com.au](http://www.cuenrg.com.au)

### FACSIMILE TRANSMISSION

TO : Company Announcements Office  
10th Floor  
20 Bond Street  
Sydney NSW 2000

FAX: DD#0

DATE : 2 October 2003

PAGES (including this page): 5

FROM : Andrew Knox

RE : **Mangga -1 Drilling Report**

---

Dear Sir

Attached please find Cue Energy Resources Limited's release with respect to the above mentioned.

Yours faithfully

A handwritten signature in black ink, appearing to read "Andrew Knox".

Andrew M Knox  
Chief Financial Officer



## Cue Energy Resources Limited

A.B.N. 45 066 383 971

### RELEASE

#### Mangga -1 Drilling Report

Cue is pleased to announce that at 6.00am on 2 October 2003 Mangga -1 was drilling ahead at 615m. Mangga -1 is located approximately 35 kilometres west of the Oyong field and approximately 30 kilometres east of the city of Surabaya in the Sampang PSC offshore East Java, Indonesia. The well is in 11 metres of water.

Mangga -1 will test the Mundu Formation, which contains oil and gas in the Oyong oil and gas discovery, within a four way dip closure, approximately 110 metres updip of gas shows in the Anggur -3 well.

Mangga is assessed to have the potential to contain approximately 110 billion cubic feet of recoverable gas (P<sub>50</sub> case) up to a high side case of approximately 320 billion cubic feet of recoverable gas.

Mangga -1 is expected to take 12 days from spud to a total depth of 1,750 metres (drill depth) with the Mundu Formation expected to be penetrated approximately seven days to eight days from spud on 27 September 2003. Mangga is being drilled using the SEDCO 601 semi submersible drilling rig.

Participants in the Sampang PSC are :

Cue Sampang Pty Ltd	15%
Santos (Sampang) Pty Ltd	45% (Operator)
Coastal Indonesia Sampang Ltd (El Paso)	40%

Any queries regarding the announcement should be directed to the company on (03) 96297577 or email [mail@cuenrg.com.au](mailto:mail@cuenrg.com.au).

Illustrations attached.

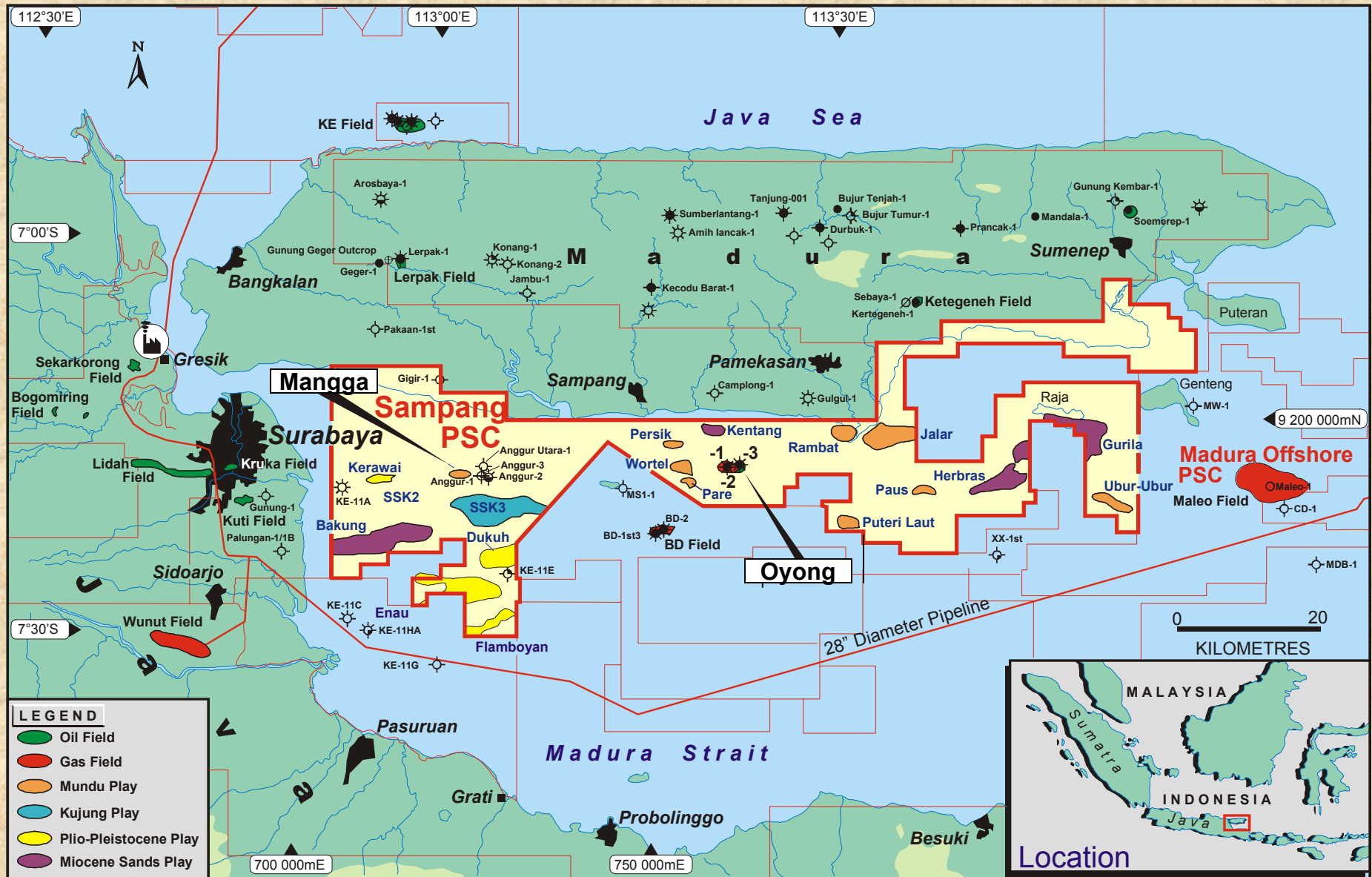
Robert J Coppin  
Chief Executive Officer

2 October 2003

# SAMPANG PSC – LOCATION MAP



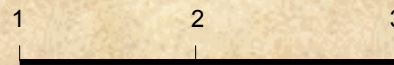
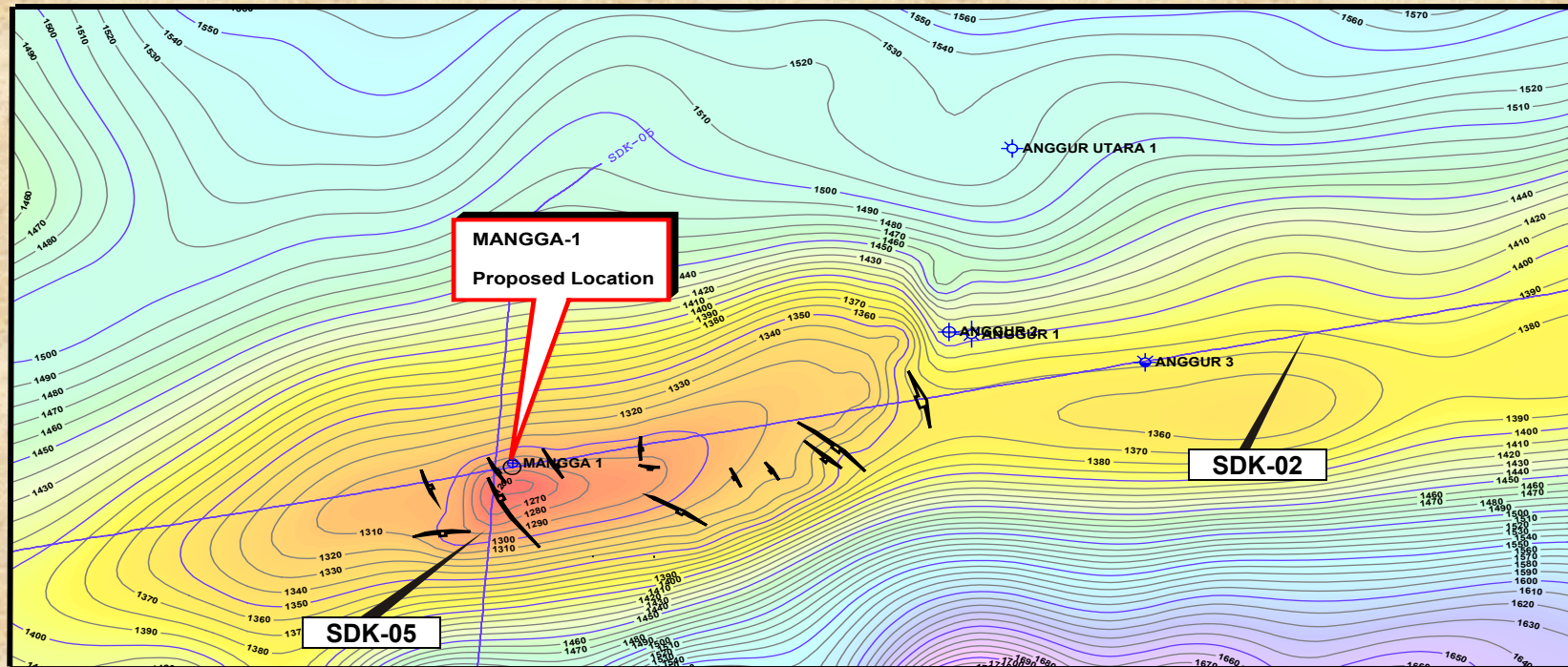
Cue Energy Resources Limited



Source Santos Ltd

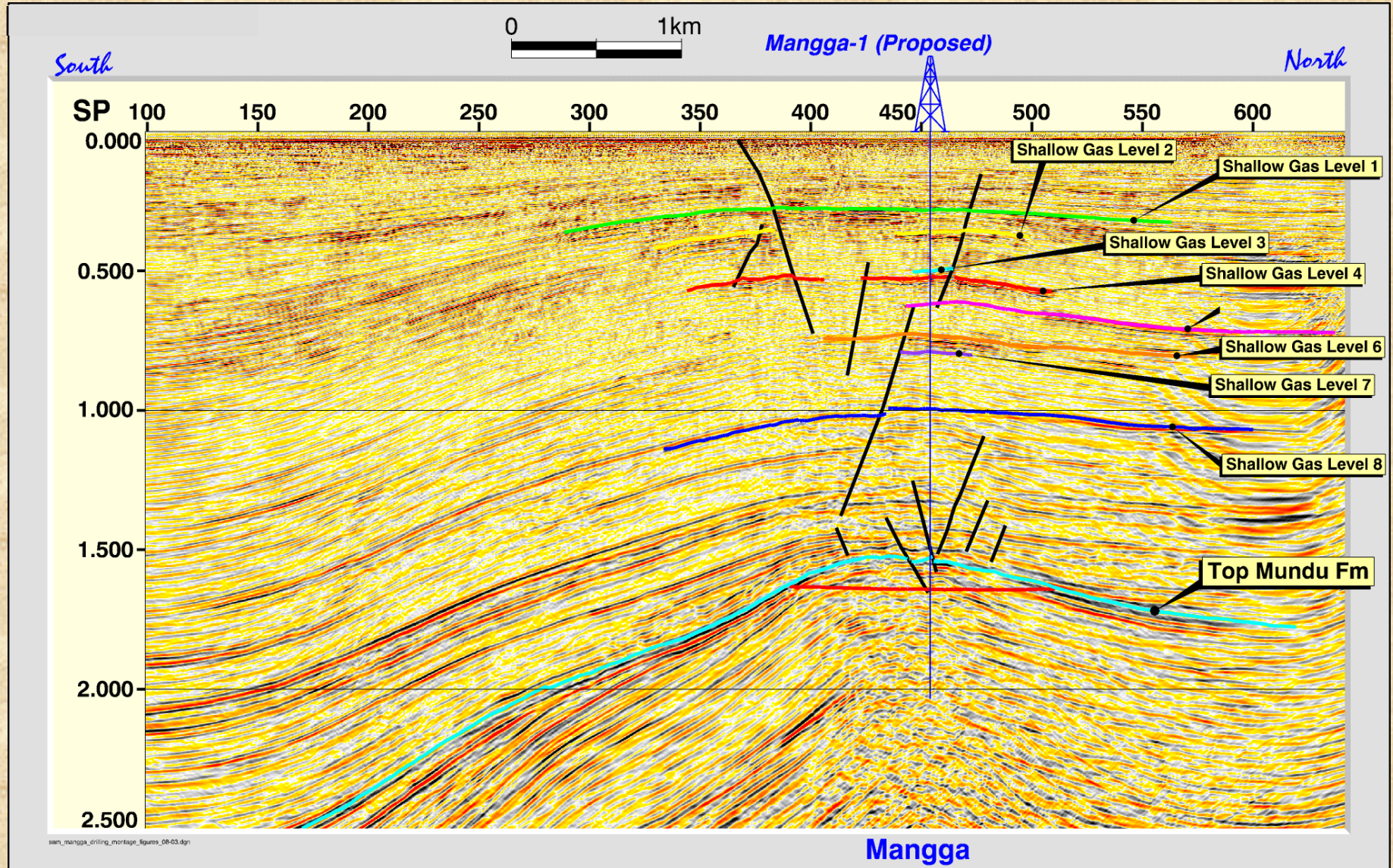
# MANGGA

## TOP MUNDU DEPTH STRUCTURE MAP



KILOMETRES

# SEISMIC LINE SDK-05



san\_mangga\_drilling\_montage\_figures\_08-03.dgn